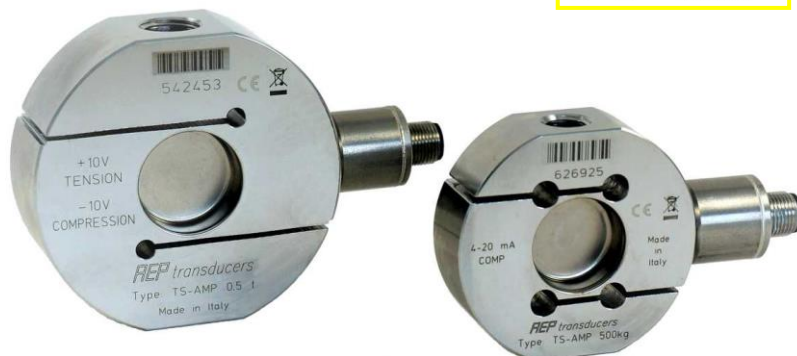


Accessori Accessories

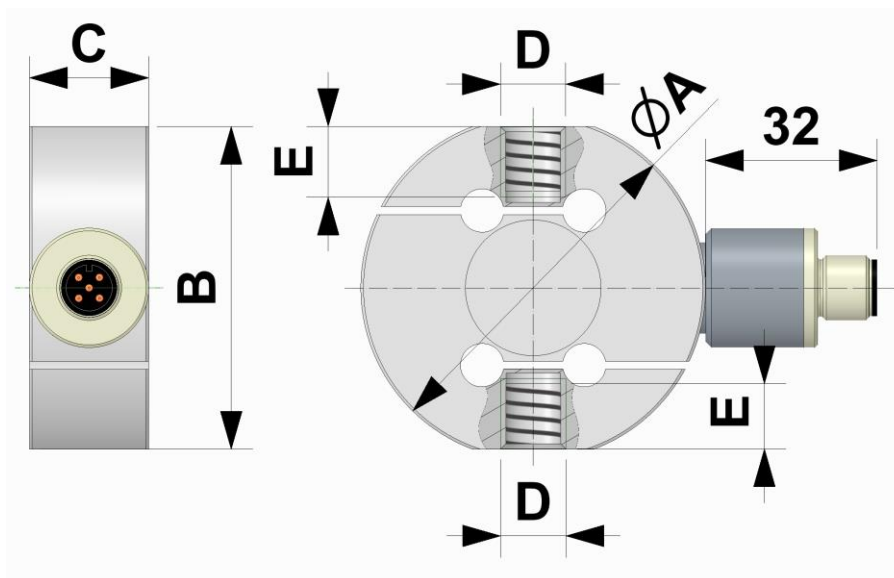


Teste a snodo sferico
Knuckle joints



Dimensioni Dimensions

[mm]



| LOAD | A | B | C | D | E | F | H |
|----------------------|------|------|----|----------|----|-------|-------|
| from 10 kg to 500 kg | 63.5 | 59.5 | 22 | M12X1.75 | 12 | ~ 112 | ~ 134 |
| from 500 kg to 2t | 82 | 78 | 30 | M16X2 | 20 | ~ 130 | ~ 170 |
| from 2.5t to 7.5t | 82 | 78 | 30 | M20X1.5 | 20 | ~ 130 | ~ 194 |

Dati Tecnici
Technical Data


| | | |
|--|--|--|
| ACCURATEZZA | ACCURACY | 0.03 % |
| CARICO NOMINALE (E_{max}) | NOMINAL LOAD (E_{max}) | 10 - 25 - 50 - 100 kg 200 - 300 - 500 kg 1 - 2 - 2.5 - 5 - 7.5 t |
| SENSIBILITA' NOMINALE | NOMINAL SENSITIVITY | 4-20 mA (3 wires) |
| SENSIBILITA' NOMINALE | NOMINAL SENSITIVITY | ± 5 V ⁽¹⁾ |
| SENSIBILITA' NOMINALE | NOMINAL SENSITIVITY | ± 10 V ⁽¹⁾ |
| TOLLERANZA DI CALIBRAZIONE | CALIBRATION TOLERANCE | $< \pm 0.1$ % |
| NON LINEARITA' | NON-LINEARITY | $\leq \pm 0.023$ % |
| NON RIPETIBILITA' | NON-REPEATABILITY | $\leq \pm 0.015$ % |
| EFFETTO DELLA TEMPERATURA (10 °C) | TEMPERATURE EFFECT (10 °C) | |
| a) sullo zero | a) on zero | $\leq \pm 0.028$ % |
| b) sulla sensibilità | b) on sensitivity | $\leq \pm 0.012$ % |
| ALIMENTAZIONE NOMINALE: 4-20 mA e ± 5 V ± 10 V | NOMINAL POWER SUPPLY 4-20 mA e ± 5 V ± 10 V | 12 – 24 Vdc 18 – 24 Vdc |
| ALIMENTAZIONE MAX. ASSORBIMENTO MAX. (senza carico): RESISTENZA DI CARICO: | MAX. POWER SUPPLY MAX. ABSORPTION (without load) LOADING RESISTANCE: | 28 Vdc 30 mA |
| a) tensione | a) tension | min. 3 K Ω |
| b) corrente | b) current | from 0 to 470 Ω |
| RESISTENZA DI ISOLAMENTO | INSULATION RESISTANCE | > 2 G Ω |
| BILANCIAMENTO DI ZERO | ZERO BALANCE | ± 1 % |
| FREQUENZA DI RISPOSTA | RESPONSE FREQUENCY | ~ 1 kHz |
| VALORI MECCANICI LIMITE riferiti al carico nominale: | MECHANICAL LIMIT values referred to nominal load: | |
| a) carico minimo | a) minimum load | 0 % |
| b) carico di servizio | b) service load | 120 % |
| c) carico limite | c) max permissible load | 150 % |
| d) carico di rottura | d) breaking load | > 300 % |
| e) massimo carico trasversale | e) max transverse load | 100 % |
| f) carico dinamico limite | f) max permissible dynamic load | 50 % |
| FRECCIA MAX. AL CARICO NOMINALE | DISPLACEMENT AT NOMINAL LOAD | ~ 0.2 mm |
| TEMPERATURA DI RIFERIMENTO | REFERENCE TEMPERATURE | + 23 °C |
| CAMPO NOMINALE DI TEMP. | TEMPERATURE NOMINAL RANGE | - 10 / + 40 °C |
| TEMPERATURA DI ESERCIZIO | SERVICE TEMPERATURE | - 20 / + 70 °C |
| TEMPERATURA DI STOCCAGGIO | STORAGE TEMPERATURE | - 20 / + 80 °C |
| PESO | WEIGHT | ~ 0.6 kg ~ 1.2 kg ~ 2.6 kg |
| CLASSE DI PROTEZIONE (EN 60529) | PROTECTION CLASS (EN 60529) | IP65 |
| MATERIALE DELLA CELLA | EXECUTION MATERIAL | Acciaio Inox / Stainless Steel |
| USCITA CONNETTORE | CONNECTOR OUTPUT | M12 4 Poles Male connector |
| TESTE A SNODO SFERICO CONSIGLIATE | RECOMMENDED KNUCKLE JOINTS | DURBAL EM12 - EM 17 DURBAL EM20 - EM25 |

Accelerazione di gravità $g=9.80434$ m/s² / Acceleration of gravity $g=9.80434$ m/s²





⁽¹⁾ Uscita positiva in TRAZIONE / Positive output in TENSION

OPZIONI

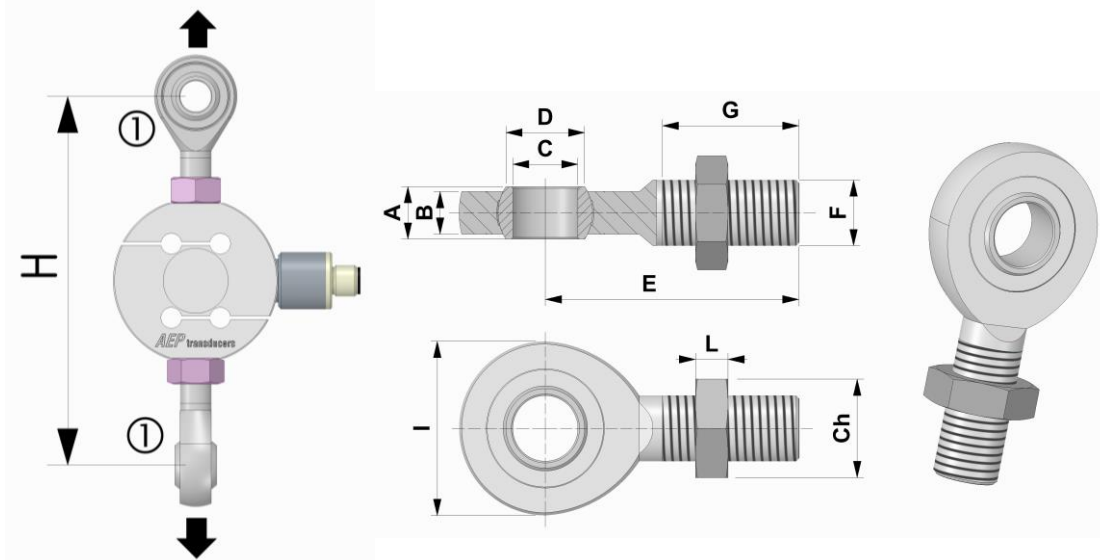
Da acquistare separatamente

OPTIONS

To be purchased separately

| | | | |
|---|-------------------|---|---|
|  | CONNM12FV5 | CONNETTORE M12x1 femmina 5 poli dritto completo di CAVO PVC costampato schermato lunghezza 3 m. | <i>Female 5 poles straight M12x1 CONNECTOR complete PVC molded CABLE, shielded, length 3 m.</i> |
|  | CMIL6MF | Uscita diretta connettore MIL6M | <i>Direct output connector MIL6M</i> |
|  | CMIL6FV5 | CONNETTORE MIL6M femmina 6 poli dritto completo di CAVO PVC schermato lunghezza 5 m. | <i>Female 6 poles straight MIL6M CONNECTOR complete PVC CABLE, shielded, length 5 m.</i> |
|  | CRT | Rapporto di taratura. Compressione o Trazione. | <i>Calibration Report. Compression or TENSION</i> |

Applicazioni Applications



① Teste a snodo sferico / *Knuckle joints*

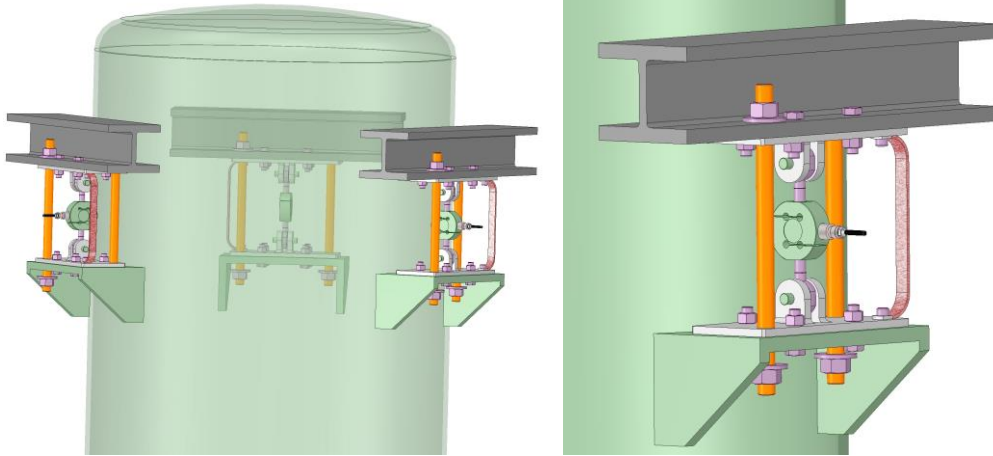
| Code: | A | B | C | D | E | F | G | I | L | Ch | H |
|--------------|----------|----------|----------|----------|----------|----------|----------|----------|----------|-----------|----------|
| CACCEM12 | 10 | 8 | 12 | 14.9 | 54 | M12 | 28 | 34 | 7 | 19 | ~134 |
| CACCEM16 | 14 | 11 | 17 | 20.7 | 69 | M16 | 36 | 46 | 8 | 24 | ~170 |
| CACCEM20 | 16 | 13 | 20 | 24.1 | 78 | M20x1.5 | 43 | 53 | 9 | 30 | ~102 |
| CACCEM25 | 20 | 17 | 25 | 29.3 | 94 | M24x2 | 53 | 64 | 10 | 36 | ~235 |

Dimensioni in accordo con ISO 12240-4 Serie E

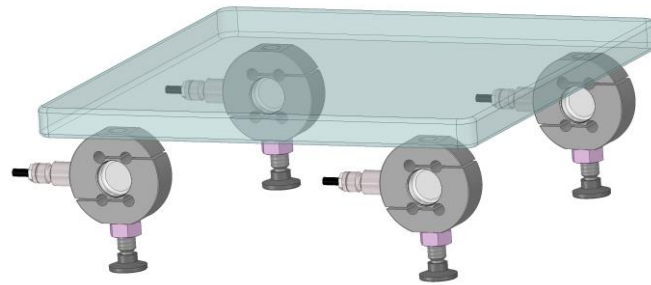
Dimensions according to ISO 12240-4 series E

Esempi d'installazione

Examples of installation



Silos a 3 punti di appoggio in TRAZIONE
Silo with 3 TENSION supporting points



Piattaforma a 4 punti di appoggio con piedi snodati.
Platform with 4 supporting points with jointed feet.

Collegamenti Elettrici Electrical Connections

USCITA STANDARD: cavo schermato PVC 105°C, Ø 5.2 mm a 4x Ø 0.35mm² conduttori stagnati.
STANDARD OUTPUT: PVC 105°C shielded cable, Ø 5.2mm with 4x Ø 0.35mm² tinned conductors.

| Load Cell | M12 | CABLE | MIL6M (optional) |
|-----------|-----|-------|--|
| | | | A = POWER+ B = 0 V / Signal - C = Not connected D = OUTPUT+ E = Not connected F = EARTH |

Schermo collegato al corpo del trasduttore.
Shield connected to the body of the transducer.

AEP transducers



Dasa-Rägister
EN ISO 9001:2015
IQ-1100-01



LAT N° 093
Calibration Centre
The products are NOT
covered by accreditation



Production Quality
Assurance Certified n°
TÜV CY 17 ATEX 0205891 Q

41126 Cognento (MODENA) Italy Via Bottego 33/A Tel: +39-(0)59-346441 Fax: +39-(0)59-346437 E-mail: aep@aep.it

Al fine di migliorare le prestazioni tecniche del prodotto, la società si riserva di apportare variazioni senza preavviso.
In order to improve the technical performances of the product, the company reserves the right to make any change without notice.