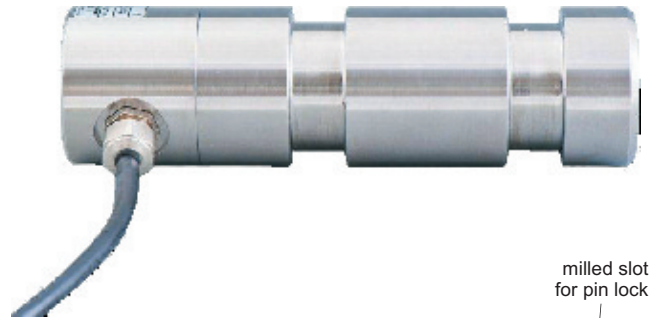


Force Transducer KAL

Special Features

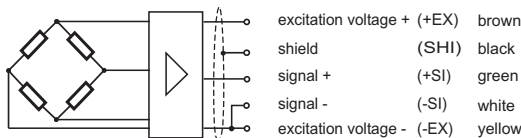
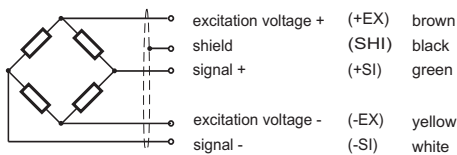
- Application as pin or axle
- Made of stainless steel
- Environmental protection IP67
- Ultimate overload; 500%
- Tailor made dimensions
- Amplifier options 4...20mA



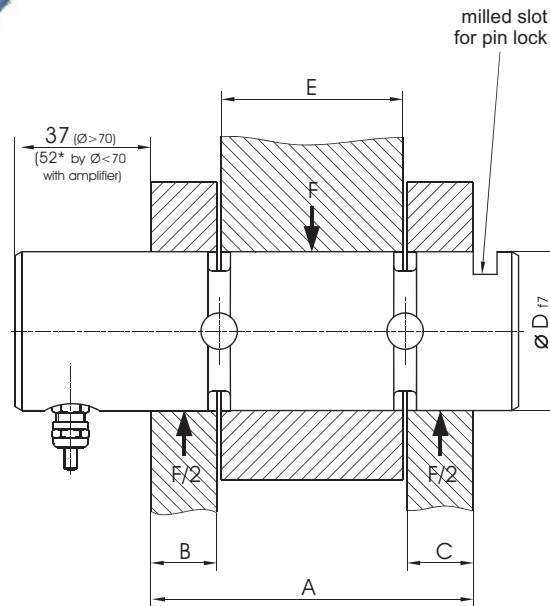
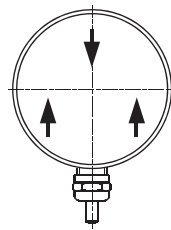
Dimensions

Wiring code

Cable length 3,0 m



load introduction



with integrated amplifier

	Rated load in kN						
	20	50	100	200	400	800	1200
Recommended diameter range	Ø 25 - 40	Ø 30 - 50	Ø 40 - 65	Ø 50 - 80	Ø 65 - 110	Ø 80 - 125	Ø 110 - 155

Recommended switching amplifiers / electronics

	Type code	Notes
Strain gauge switching amplifier	BS 805.01	Supply voltage 10 - 30VDC Analogue output 4 - 20mA 2 set points 230VAC/6A Environmental protection IP 65
Strain gauge Interface	DI 301DP.21	Supply voltage 10 - 30VDC Digital output PROFIBUS DP 2 set points 42V/0,1A Environmental protection IP65

Force Transducer KAL

Specifications

Accuracy class	%S	0,5%	1,0 %
Depends on: - Installation conditions, - axle geometry			Amplifier option: 4-20mA
Rated load (=F _N)	kN	20 ... 1200 ^{1), 3)}	20 ... 1200 ^{1), 3)}
Safe overload	%F _N	150	150
Ultimate overload	%F _N	>500	>500
max. side load	%F _N	10	10
Sensitivity (=S)		1,00mV/V/ ± 0,01 mV/V	16 mA +/- 0,2mA - max. burden 300Ω
Zero signal		0,0 mV/V +/- 0,03 mV/V	4 mA +/- 0,3 mA
recommended excitation voltage		10 VDC	10 ... 30 VDC
Reference temperature	°C	23	23
Compensated temperature range	°C	-20 ... +60	-20 ... +60
Temperature effect on zero/10K	%S/10K	0,2	0,5
Temperature effect on output/10K	%S/10K	0,2	0,5
Environmental protection (DIN 40050 / IEC 529)		IP 67	IP 67

1) Calibration in t upon request

3) others loads upon request

Type code / Order example

Type code
KAL/100kN/0,5
KAL-E/50kN/0,5/24V/0...10V (with integrated amplifier)

Accessories / Options

	Type code	Description
Cable extension	XKC 042	Cable extension m
Connector male	XKC 044.01 XKC 046.03 XKC 071	Connector male, mounted to sensor body, 5 pin Connecting cable 5m 6 pin plug connected to force transducer (TEDS)
Mechanical options		Slot for pin keeping plate (retainer) Lubrication holes Axial hole, threaded (for mounting of extractor) Radial hole (threaded available) Male thread on pin Cable outlet axial

When ordering a load pin KAL a dimensioned drawing should be supplied or approved by the customer. Please consult our engineers for application and dimensional issues if you are not familiar with these sensors.