

Force Transducer KAM-S

Special Features

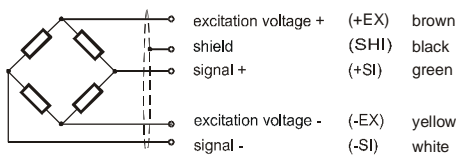
- 100N to 50kN
- Small dimensions
- Rugged design
- Environmental protection IP 65



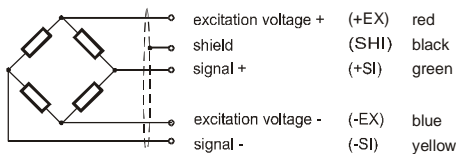
Dimensions

Wiring code

Cable length 1,5 m



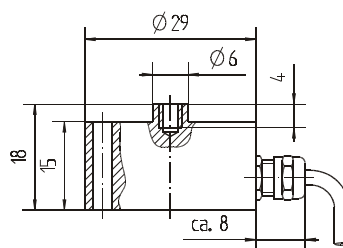
for KAM-S 100N to 1kN and 50kN



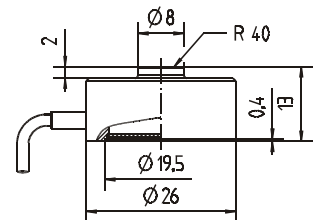
for KAM-S 2kN to 20kN

Compressive load is positive change of signal

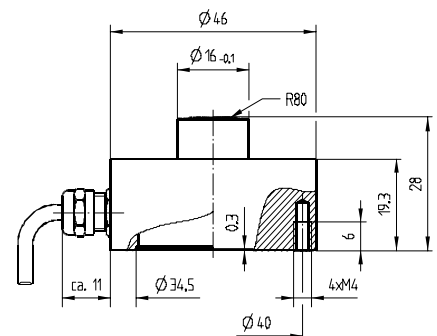
Rated load	Weight
KAM-S 100N to 1kN	approx. 25g
KAM-S 2kN to 20kN	approx. 55g
KAM-S 50kN	approx. 230g



KAM-S 100N to 1kN (aluminium)



KAM-S 2kN to 20kN (stainless steel)
no fixing holes



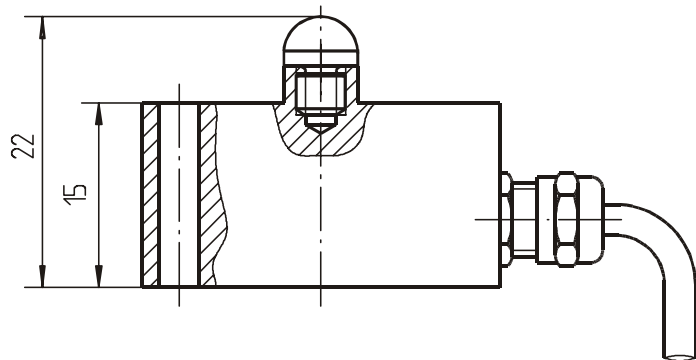
KAM-S 50kN (stainless steel)

Specifications

Accuracy class	%S	0,5	1
Rated load(=F _N)	N	100/200/500	
	kN	1/2/5	10/20/50
Safe overload	%F _N		150
Ultimate overload	%F _N		>300
Max. side load	%F _N		20
Reference temperature	°C		23
Compensated temperature range	°C		-20 . . . +60
Storage temperature range	°C		-30 . . . +70
Environmental protection (EN 60529)			IP 65
Sensitivity (=S)	mV/V	1 ± 0,01	1 ± 0,01
Zero balance	%S	≤3	≤3
Max. excitation voltage	V	10	10
Input resistance	Ω	380 ± 30	760 ± 50
Output resistance	Ω	352 ± 1,5	710 ± 10
Insulation resistance	Ω	> 5 · 10 ⁹	> 5 · 10 ⁹
Reproducibility (not fix mounted)	%S	≤1	≤2
Reproducibility (fix mounted)	%S	≤0,5	≤1
Combined error from nonlinearity and hysteresis ¹⁾	%S	≤0,5	≤1
Temperature effect on zero/10K	%S	≤0,5	≤0,5
Temperature effect on output/10K	%S	≤0,5	≤0,5
Creep in 30 minutes	%S	≤0,5	≤0,5

1) according to VDI / VDE 2638

Appliances for Installation and Mounting



KAM-S 100N to 1kN with load button

Type code / Order example

KAM-S / 100N / 1

Accessories / Options

	Type code	Description
Load button	XKM 062	Load button K4-3 for KAM-S 100N to 1kN
Plug	XKC 041	6 pin plug connected to sensor cable